



# GMT MONTHLY MEMBERSHIP PROGRESS REPORT

Results as of: 8/31/2019

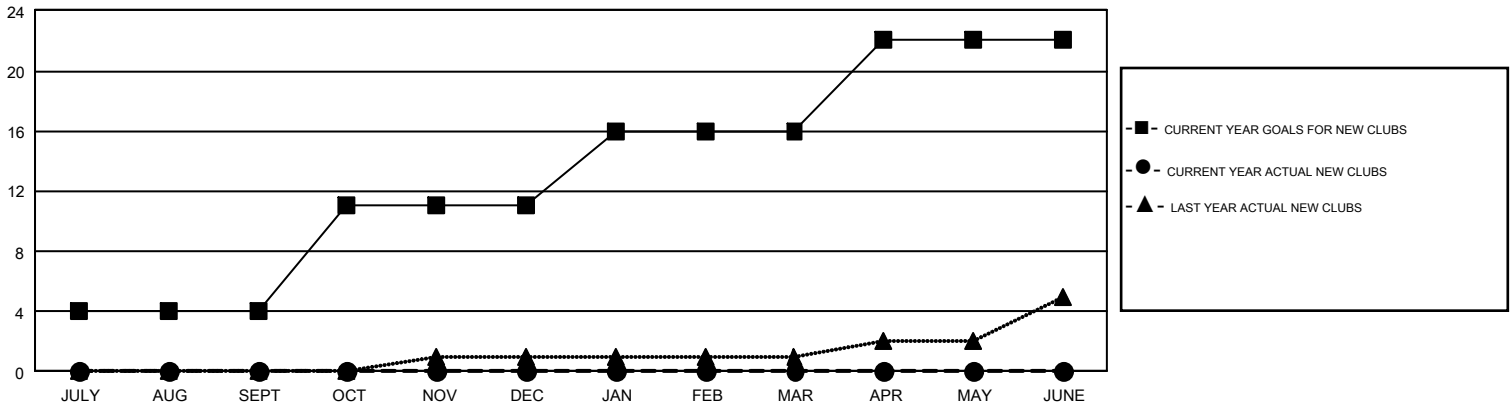
## GMT Constitutional Area 1, Group J

GMT: OPEN

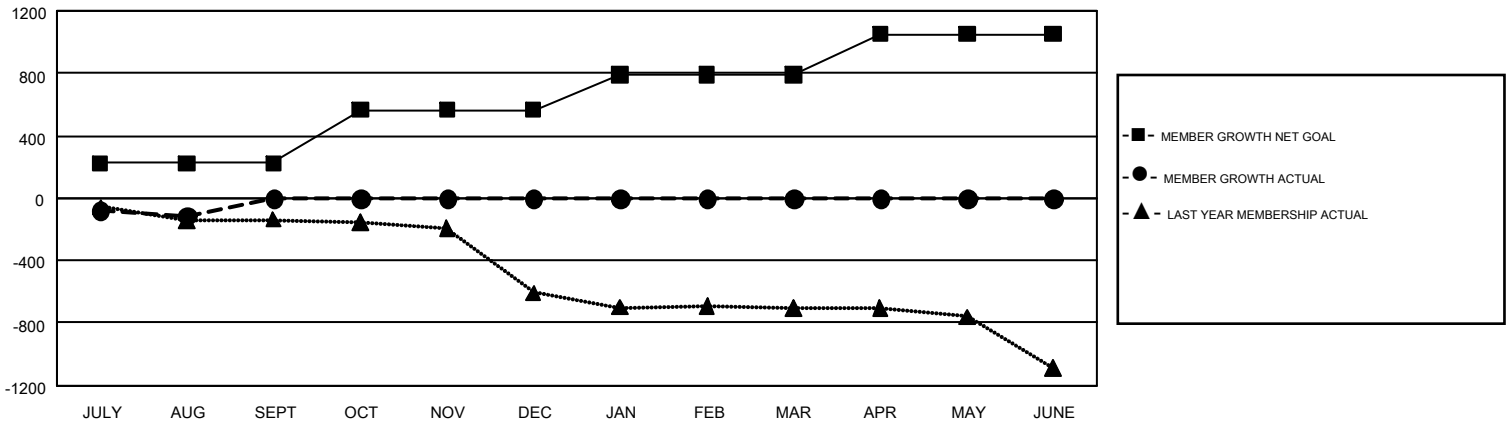
REPORT DOES NOT INCLUDE CLUBS IN UNDISTRICTED AREAS.

Clubs				Members			
RESULTS FOR 2019-2020				RESULTS FOR 2019-2020			
QUARTER	NEW CLUB GOAL	NEW CLUBS	DROPPED CLUBS	QUARTER	MEMBER GROWTH NET GOAL	MEMBER GROWTH ACTUAL	DROPPED MEMBERS ACTUAL (including transfers)
JULY/AUG/SEPT	4	0	2	JULY/AUG/SEPT	223	259	337
OCT/NOV/DEC	7	0	0	OCT/NOV/DEC	343	0	0
JAN/FEB/MAR	5	0	0	JAN/FEB/MAR	225	0	0
APR/MAY/JUNE	6	0	0	APR/MAY/JUNE	260	0	0

GOALS AND ACTUAL NEW CLUBS CUMULATIVE



GOALS AND ACTUAL MEMBERS CUMULATIVE



DROPPED CLUBS: 2	131 CLUBS OF 750 ADDED 1 OR MORE NEW MEMBERS	<b>GENDER DISTRIBUTION</b> MALE 13,647 (71.69%) FEMALE 5,388 (28.31%)
<b>DROPPED MEMBERS</b> DECEASED 40 CLUB CANCELLED 0 OTHER 296 <b>TOTAL 336</b>	<a href="#">CLICK HERE FOR CUMULATIVE MEMBERSHIP DATA</a>	TOTAL FAMILY UNIT MEMBERS 3,469 FAMILY MEMBERS PAYING HALF DUES 1,767